



Welcome to our autumn SSPP SEND Newsletter!

Every term, our newsletter will provide information about SEND at SS Peter and Paul Catholic Primary School. We will also keep you updated with the Telford & Wrekin local offer and guidance.

Welcome!



**Miss Louise
Russell
Federation
SENCO**

As SS Peter and Paul's Special Educational Needs and Disability Coordinator (SENCO), I am here to offer support and advice regarding additional needs or SEND support for your child.

As a school, we value the engagement of our parents so please do not hesitate to get in touch if you have any questions. My contact email address is: send.obs@taw.org.uk

Alternatively, you may find further information about our SEND provision on the school website:

www.sspeterandpaulcatholicprimary.org.uk/home/key-info/send/

Contents of this term's news:

- SENCO welcome
- Telford and Wrekin's local offer and SEND newsletter.
- Wellbeing APPs to explore - Headspace for kids.
- SEND in Focus - Motor Coordination.
- Interventions @ SSPP
- SSPP SEND parent questionnaire feedback.



Telford and Wrekin SEND local offer.

For further information about the Telford and Wrekin SEND, please see the link below:

<https://www.telfordsend.org.uk/site/index.php>

You can also find a copy of the Telford & Wrekin SEND parent newsletter.

www.telfordsend.org.uk/info/1/home/109/send_news

Wellbeing APPs to explore

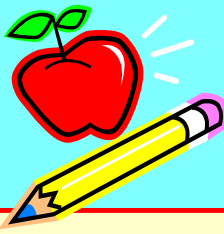


Available for IOS or Android phones.

Headspace for kids is a fun app which teaches the children how to relax through mindfulness.

There are bespoke exercises tailored for: 3-5 years, 6-8 years and 9-12 years some include:

- Calm - breathing exercises.
- Kindness - visualisations.
- Cool off - to re-balance.
- Sleep tight - for sleep.
- Stay positive - managing feelings.
- Good morning - stretching for the day.
- Rest and Relax - moments of calm and balance.



SEND NEWS!



SEND IN FOCUS

Hearing the words 'Special Educational Needs' or 'Learning difficulty' can be a worrying experience for parents especially if little is known about the different terminology, phrases, conditions and diagnosis that are often talked about by professionals. At SSPP, we want to help parents to make sense of the 'jargon' and give some guidance, advice and ways you can help your child at home.

This term's focus is: Fine and Gross Motor Coordination

Motor skills are muscle movement which enable children to complete everyday tasks with increasing independent, from feeding themselves to moving from place to place. Typically, children develop certain motor skills at specific ages, but not every child will reach milestones at precisely the same time.

Fine Motor skills:

Fine motor skills involve the coordination of hands and fingers with the eye (Hand-eye coordination). Skills include being able to grip and manipulate objects including knife and fork, holding a pencil, using scissors, getting dressed, doing buttons and zips, building model structures, placing puzzle pieces together, drawing and painting.

Gross Motor skills:

Are movements involving the large muscle groups. Motor skills include walking, kicking, jumping, climbing stairs, throwing and catching a ball, hopping, riding a bike or scooter.



How can we as parents/carers develop gross/fine motor control skills?

Fine Motor activities at home:

- Play dough
- Puzzles
- Drawing, colouring, painting.
- Cutting with scissors.
- Using a knife and fork for all meals.
- Tying shoelaces.
- Getting dressed independently.
- Bath time play.
- Sand/water play.

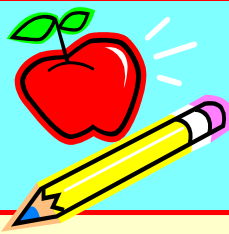


Gross Motor outside of school:

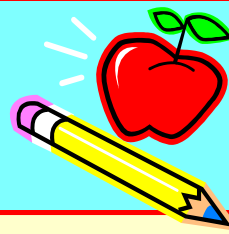
- Trampolining
- Hopscotch/balancing games
- Family games including throwing, catching.
- Learning to ride a scooter/bike.
- Dancing!
- Balancing activities.
- Family walks.
- Tennis, football, running.



At SSPP, we support the children's gross and fine motor control skills across the daily curriculum including PE lessons, Cool Kids intervention, Calm Brain movements within the classroom, wobble cushions, Balanceability for KS1, Bikeability for KS2, after school clubs, daily mile, activities at lunch time. We also provide support for children who find fine motor control difficult. Additional provision includes pencil grips, sloping boards, a range of pens, specific exercises, laptops,



SEND NEWS!



Intervention programs @ SSPP

To support our pupils with special educational needs, SSPP provides a range of intervention/support programs.

The information below is about the interventions Teach Your Monster to Read and Times Table Rockstar.



When it comes to times tables, speed and accuracy are important - the more facts your child remembers, the easier it is for them to do harder calculations.

Times Table Rockstars is a fun and challenging programme designed to help children master their times tables.

To be a Times Table Rockstar, the child needs to answer any multiplication fact up to 12×12 in less than 3 seconds!

The children are encouraged to play as a single player or in a multi-player scenario.

Garage - questions are set by the class teacher and focus on specific times tables covered in class. Coins are earned for each correct answer that can be converted into clothing, items or new guitars!

Studio - Questions will be any from 2×2 to 12×12 . Children can challenge themselves to become a Rock God, Rock Legend, Rock Star or Busker!

Each child should have their own Times Table Rockstar log in from school.



Teach Your Monster to Read is an award-winning series of games which help children to learn to read.

There are three games for children to play, covering the two years of the reading journey.

- First steps - for children just starting to read letters and sounds.
- Fun With Words - for children who are confident with letters and sounds and are starting to read words.
- Champion Reader - to develop a child's confidence in reading sentences.

The game takes the children on a magical journey, meeting colourful characters on the way and collecting fantastic rewards.

As the children progress, they rehearse a range of skills; matching letter sounds, blending, segmenting, tricky words and reading full sentences.

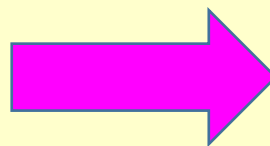
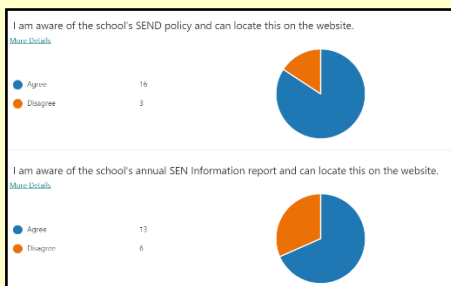
Teach Your Monster to Read is **free** to play online or you can download the App version for £4.99.



Parental Voice

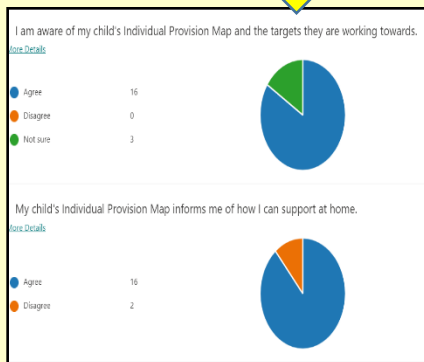
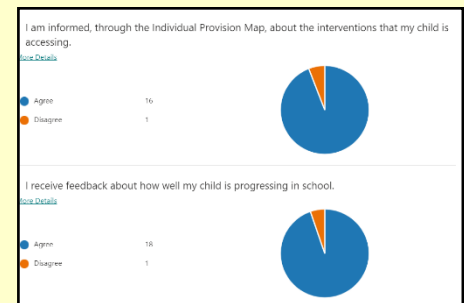
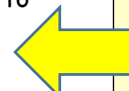
What did you say about SEND at SSPP?

As a school, we are always interested in hearing parental thoughts about our current provision and practices. Last academic year, we asked for your views about SEND. Below are the findings of our online questionnaire and how we have addressed some of your suggestions and ideas.

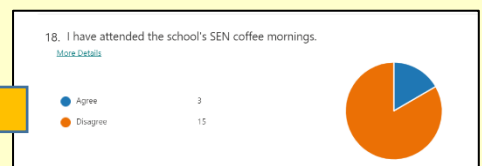


We have re-designed the SEND page of the website to make it more accessible to parents and children.

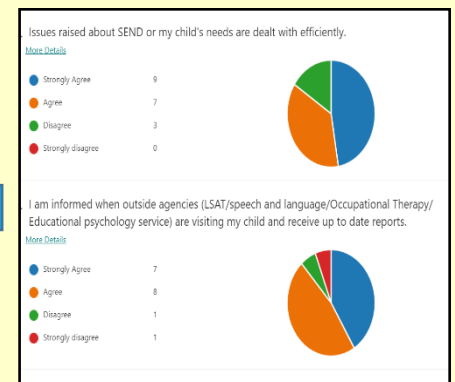
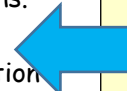
Individual provision maps are shared with parents and are sent to parents each term either via email or as a paper copy. Parents are encouraged to feedback on targets and progress. We have worked with families to identify further support at home.



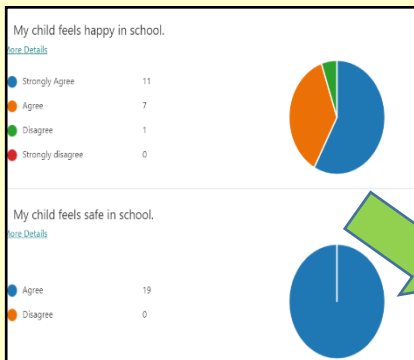
Coffee mornings to continue to take place in 2021-2022. Dates to be confirmed. 😊



Concerns raised by parents are a priority. Federation SENCO to contact parents to discuss concerns and look at solutions.



All parents receive notification and consent forms for external agency involvement. Reports are sent to parents once they have been received by school.



Wonderful to receive such positive feedback 😊

